

# 65ft Aluminum Crew Boat - 6889



Ocean Marine Brokerage Service |  
Louisiana  
(985) 448-0409 / Fax: (985) 302-0984

Vessel # 6889 / CR

Contact: Nick Kokinos -  
[nick@oceanmarine.com](mailto:nick@oceanmarine.com)

## REGISTRATION

YEAR BUILT:	1982
BUILDER:	Camcraft
FLAG:	U.S
CLASSIFICATION:	None Required
CONSTRUCTION:	Aluminium
GROSS / NET TONS:	63 / 43
CERTIFIED:	Yes
LOADLINE:	None Required

## LOCATION

LOCATION:	US GULF
-----------	---------

## DIMENSIONS

LENGTH:	65 FT. / 19.83 MT.
BEAM:	19.9 FT. / 6.53 MT.
DRAFT:	5.0 FT. / 1.53 MT.
DRAFT LOADED:	0.0 FT. / 0.0 MT.
REG. LENGTH:	62.2 FT. / 20.41 MT.
EYE LEVEL:	0.0 FT.

## CAPACITIES

	Gal.	M Tons	Barrels
FUEL:	1000	4.0	24.0
POTABLE WATER:	160	1.0	4.0
BALLAST:	0	0.0	0.0

## PERFORMANCE

SPEED:	22 KTS
CONSUMPTION:	GPH: 0.0    Tons Per Day: 0.0

## ACCOMMODATIONS

STATEROOMS:	2
STATEROOMS:	1

## MACHINERY

MAIN ENGINES:	2 GM-12V71
HORSEPOWER:	1000
REDUCTION GEAR:	Twin Disc    RATIO: 2:1
NOZZLE:	no
GENERATORS:	Kubota (2) GM-371 - 30 KW
BOW THRUSTER:	No
STERN THRUSTER:	No

## DECK EQUIPMENT

CRANES:	None
STERN ROLLER:	None
PUSH KNEES:	No
SPUD WELLS:	None
SPUD WINCH:	None

## ELECTRONICS

AUTO PILOT:	No
DEPTH FINDER:	Yes
PLOTTER:	No
EPIRB:	Yes
GPS:	Yes
RADIO VHF:	YES
RADIO SSB:	Yes

RADAR:

YES

---

## OTHER EQUIPMENT

AIS

---

## DESCRIPTION

65ft Aluminium Crew Boat For Sale. Current COI

---

Details pertaining to this vessel are obtained from sources believed to be reliable, however we can not guarantee their accuracy. Buyers should instruct surveyors and agents to investigate details for validity. All offers are subject to prior sale, changes in price and / or inventory, and without notice.

***NOTE: See Photos on next page***



6889cr



6889cr



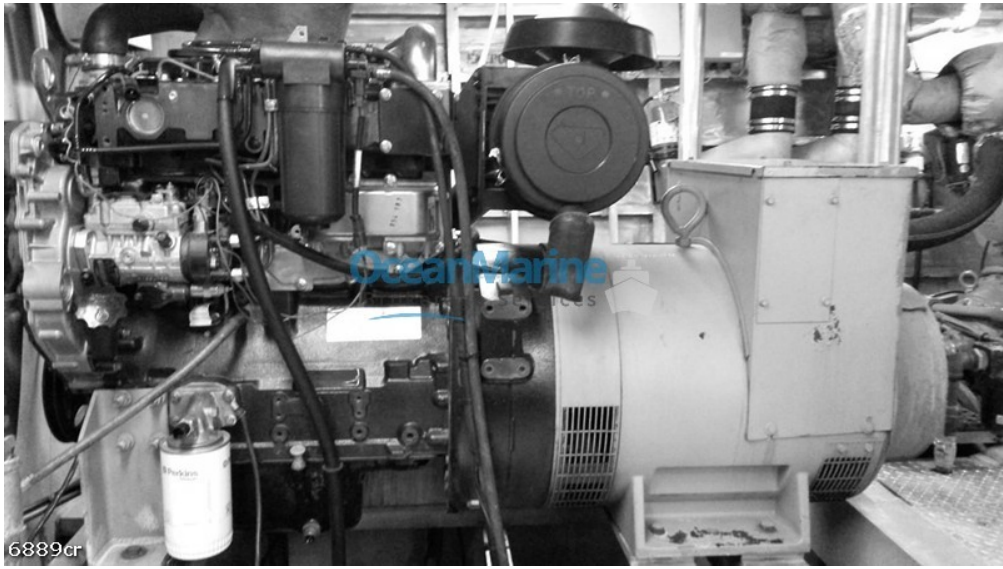
6889cr



6889cr



6889cr



6889cr



6889cr



6889cr



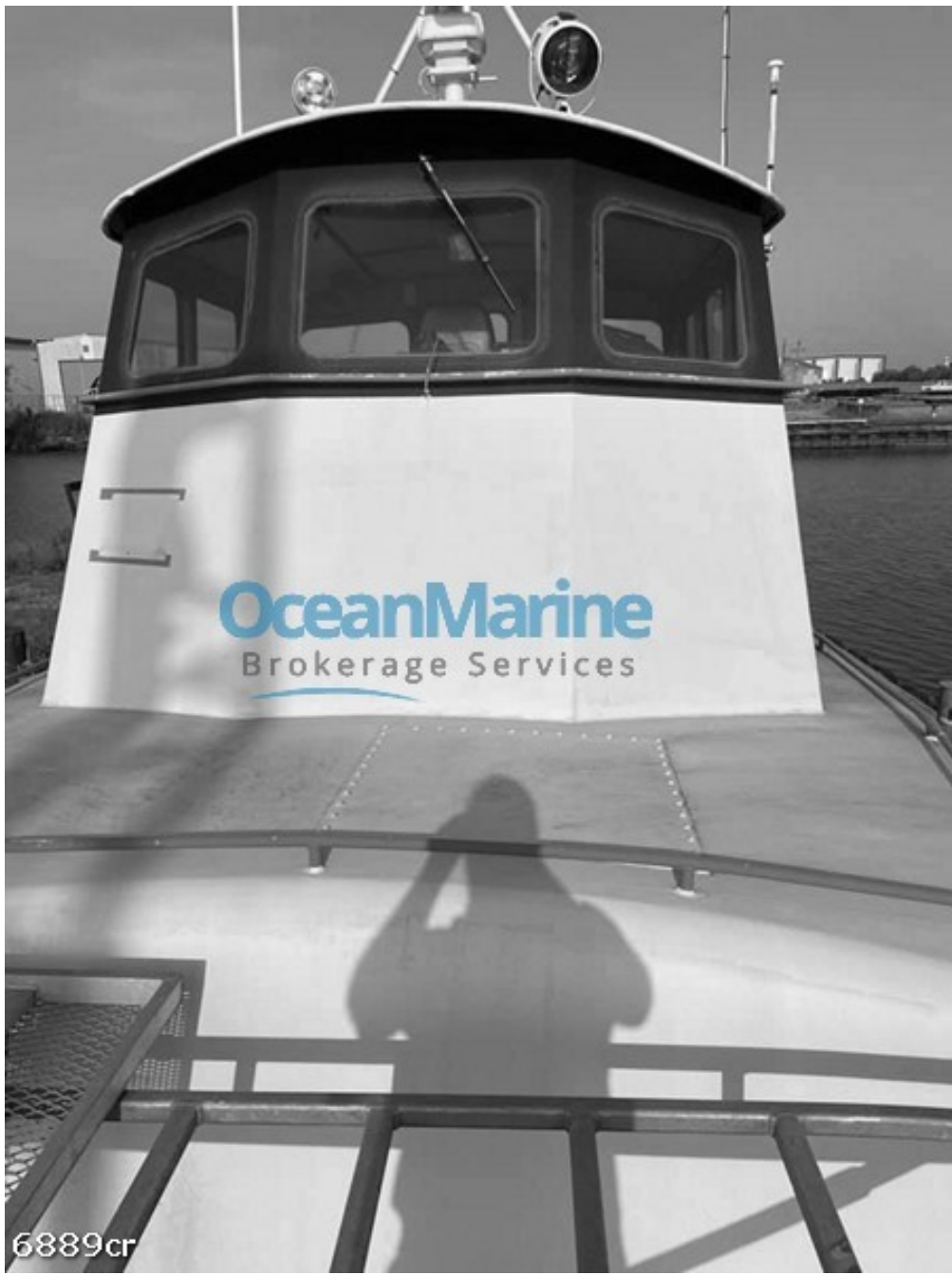
6889cr



6889cr



6889cr



6889cr



6889cr