

38ft Aluminium Ex; Swift Boat Crew-Patrol Boat - 15303



Ocean Marine Brokerage Service |
Louisiana
(985) 448-0409 / Fax: (985) 302-0984

Vessel # 15307 / CR
Price: \$45,000

Contact: Steve Kokinos, Sr -
steve@oceanmarine.com

REGISTRATION

BUILDER:	SEWART SEACRAFT INC
FLAG:	U.S
CLASSIFICATION:	None Required
CONSTRUCTION:	Aluminium
GROSS / NET TONS:	22 / 17
CERTIFIED:	No
# OF PASSENGERS:	6
LOADLINE:	NONE REQUIRED

LOCATION

LOCATION:	EAST COAST-US
------------------	---------------

DIMENSIONS

LENGTH:	38 FT. / 12.47 MT.
BEAM:	12 FT. / 3.94 MT.
DRAFT:	1.6 FT. / 0.49 MT.
DRAFT LOADED:	0.0 FT. / 0.0 MT.
REG. LENGTH:	50.0 FT. / 15.3 MT.
EYE LEVEL:	0.0 FT.

CAPACITIES

	Gal.	M Tons	Barrels
FUEL:	500	2.0	12.0
POTABLE WATER:	0	0.0	0.0
BALLAST:	0	0.0	0.0

PERFORMANCE

SPEED:	22 KTS
CONSUMPTION:	GPH: 0.0 Tons Per Day: 0.0

MACHINERY

MAIN ENGINES:	2 GM-6V92**
HORSEPOWER:	1000
REDUCTION GEAR:	TWIN DISC-MG514 RATIO: 2:1
NOZZLE:	None
GENERATORS:	(1) - 15 KW
BOW THRUSTER:	No
STERN THRUSTER:	No

DECK EQUIPMENT

CRANES:	no
STERN ROLLER:	None
PUSH KNEES:	Yes
SPUD WELLS:	None
SPUD WINCH:	None

ELECTRONICS

AUTO PILOT:	No
DEPTH FINDER:	Yes
PLOTTER:	No
EPIRB:	No
GPS:	Yes
RADIO VHF:	Yes
RADIO SSB:	No
RADAR:	Yes

DESCRIPTION

Used 38ft Aluminium ex: Navy Seal Swift Boat - crew boat for sale. 22 kts speed. Basic Electronics. Non-COI boat. Ex: US Navy Seal Swift Boat from Vietnam era. Aluminum boat with bullet steel sides. 18" draft when tank is half full. ** (1) main engine needs liners. Has been in construction industry. Has push knees. Great work boat

Details pertaining to this vessel are obtained from sources believed to be reliable, however we can not guarantee their accuracy. Buyers should instruct surveyors and agents to investigate details for validity. All offers are subject to prior sale, changes in price and / or inventory, and without notice.

NOTE: See Photos on next page



15307cr



15307cr





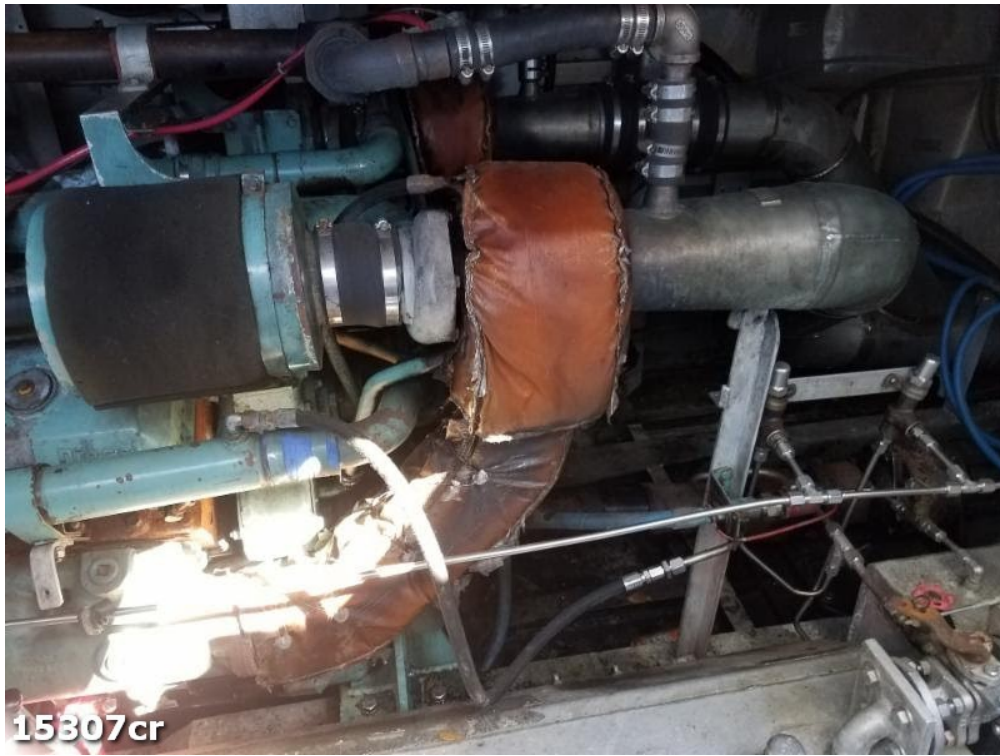
15307cr



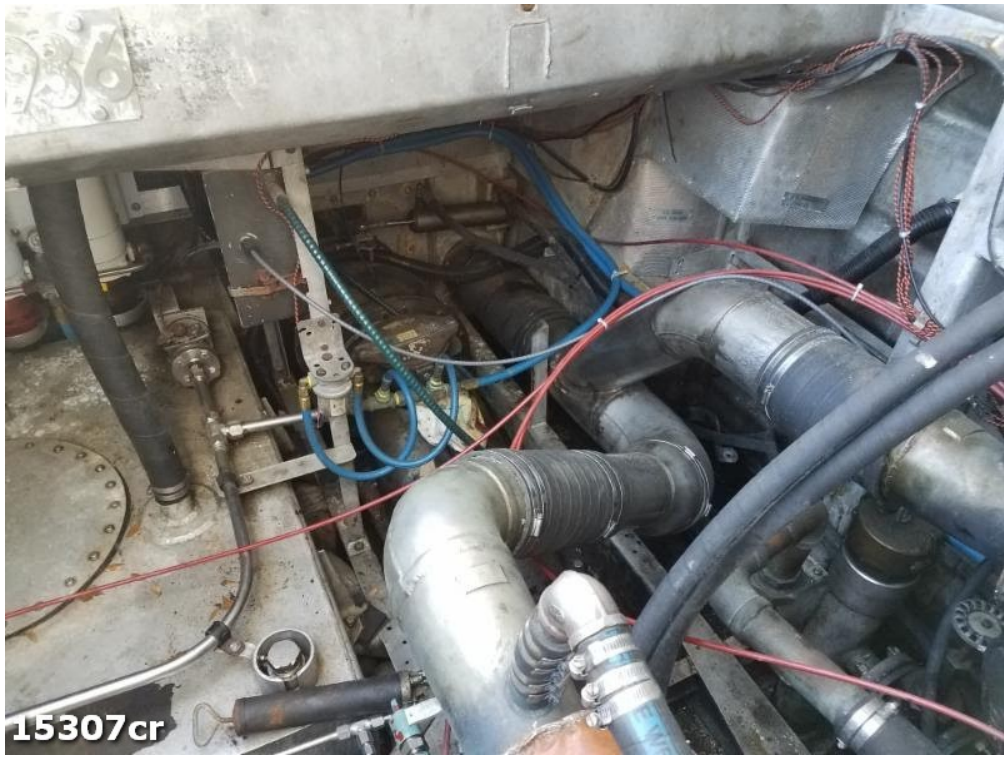
15307cr



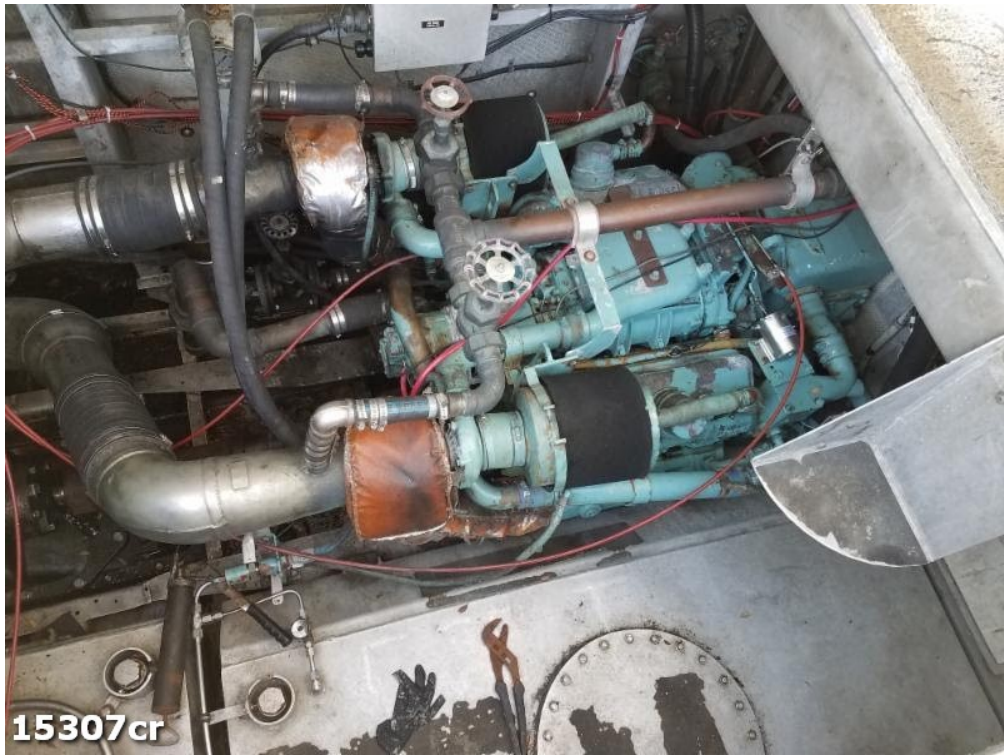
15307cr



15307cr



15307cr



15307cr



15307cr



15307cr



15307cr